



High Performance Cutting

PROCUT SERIES

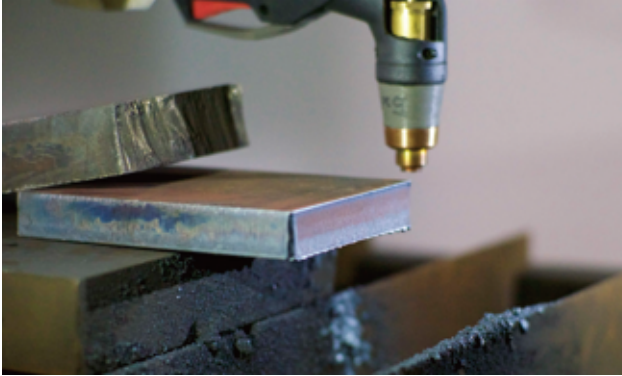
Plasma cutting and gouging. Recommend for Hand-held cutting up to 25mm.



Compactive | More productive | Easy to use

Superior Cutting Performance

The PROCUT 75MAX plasma system is a versatile machine for heavy-duty cutting cutting 25 mm (1") in demanding environments. Designed to maximize uptime and productivity, the system offers the latest technological innovations, and the PX series torches support handheld and mechanized cutting of a wider range of metal thicknesses.



Easy To Use

- One of our most compact and light weight systems, the PROCUT 75MAX is the ideal portable plasma cutter for a 25 mm (1") rated cutting system
- Light weight, compact design and convenient mounting feet allow for easy mounting in any application

Operation Capacity

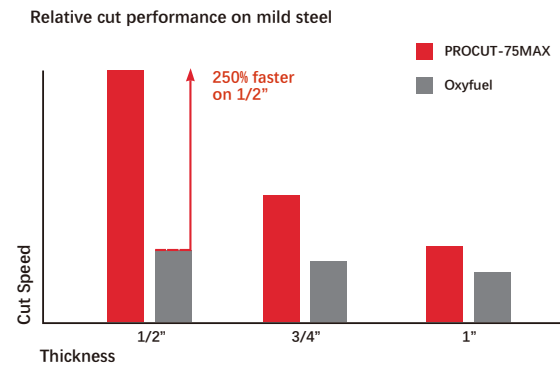
		PROCUT 45MAX	PROCUT 75MAX
For Manual	Quality Cutting	16mm@500mm/min	25mm@500mm/min
	Max Cut-off	29mm@125mm/min	35mm@125mm/min
For CNC	Max Pierce*	12mm	16mm
For Gouging	Metal Removal Rate	7.5 lbs per hour	10.7 lbs per hour
	Groove Profile	3.2mm D x 6.8mm W	3.5mm D x 6.6mm W

*Pierce rating for handheld using or with CNC torch height control



Maximum Productivity

- Finish jobs faster with cut speeds two and a half times greater than oxyfuel on 12 mm (1/2") mild steel.
- Superior cut quality let you spend less time on grinding and edge preparation.
- Multiple, easy-to-use torch styles let you tackle a wide variety of jobs using the same system.



More Reliability And Stability

Designed with 60% duty cycle for the most demanding production environments

The torch is versatile and durable enough to handle a variety of jobs

Manual Cutting

Plasma cutting is suitable for a wide variety of applications, such as straight cutting, bevel cutting, gouging, hole cutting.

Cutting

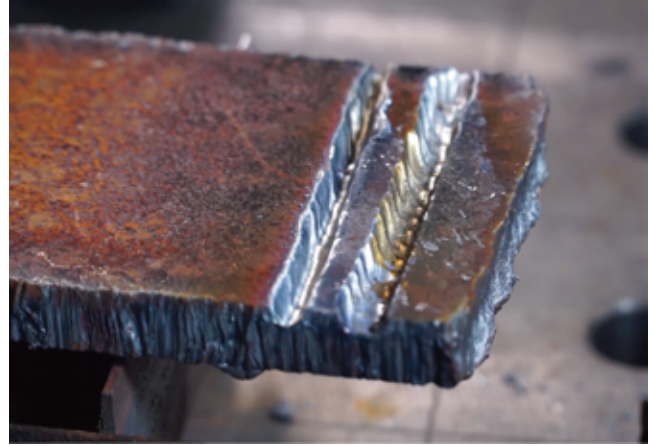
Whether in a shop, factory at home or in the field, Procut 45/75MAX system are available with a handheld or machine torch to fit the application.



*30mm M.S. by PROCUT-75MAX

Gouging

Procut system also effective for gouging metal, deep and fast.



*Straight/wave gouge by PROCUT-75MAX

Beveling

Creates bevels for weld-preparation surfaces or active edges by handheld or automation.



*16mm M.S. 60° bevel cutting by PROCUT-75MAX

Pipe Cutting

Plasma's versatility enables it to cut pipe, tube for work-shop.



*90mm diameter, 9mm thickness pipe cutting by PROCUT-45MAX



Specifications

	PROCUT 45MAX	PROCUT 75MAX
Input voltages (± 10%)	230 V, 1-PH, 50-60 Hz	230 V, 1-PH, 50-60 Hz 400 V, 3-PH, 50-60 Hz
Kilowatt output	6.5 kW	10.88kW
Input current @ 6.5 kW	230 V, 1-PH, 33 A	230V,1-PH,47 A 400V,3-PH,27 A
Output current	10-45 A	75 A
Rated output voltage	145 VDC	145 VDC
Duty cycle @ 40° C (104° F)	60% @ 45 A	75A@60%
Open circuit voltage (OCV)	280 VDC	300 VDC
Dimensions with handles	540 mm D;240 mm W; 480 mm H	540 mm D;240 mm W; 480 mm H
Weight with 6 m Torch	26 KG	26 KG
Torch	PX 62/6 m; Non-HF	PX 82/6 m; Non-HF
Gas supply	Air	Air
Recommended gas inlet flow rate/pressure	150 l/min (317 scfh) @ 5.5 bar (80 psi)	Cutting:160l/min (338 scfh) @5.5bar (52psi) Gouging:189l/min (400 scfh) @5.9bar (85 psi)
Engine drive requirement	12.5 kVA (10 kW) for full 45 A output	17KW for full 75 A output
Certifications	CE, ROHS	CE, ROHS



PX82

Torch and Consumables



TP105

CNC Torch And Consumables



High Performance Cutting

Web & Mail

www.cn-topwell.com
sales@topwellwelders.com

Phone

(+86)571-88231791
(+86)571-88231792